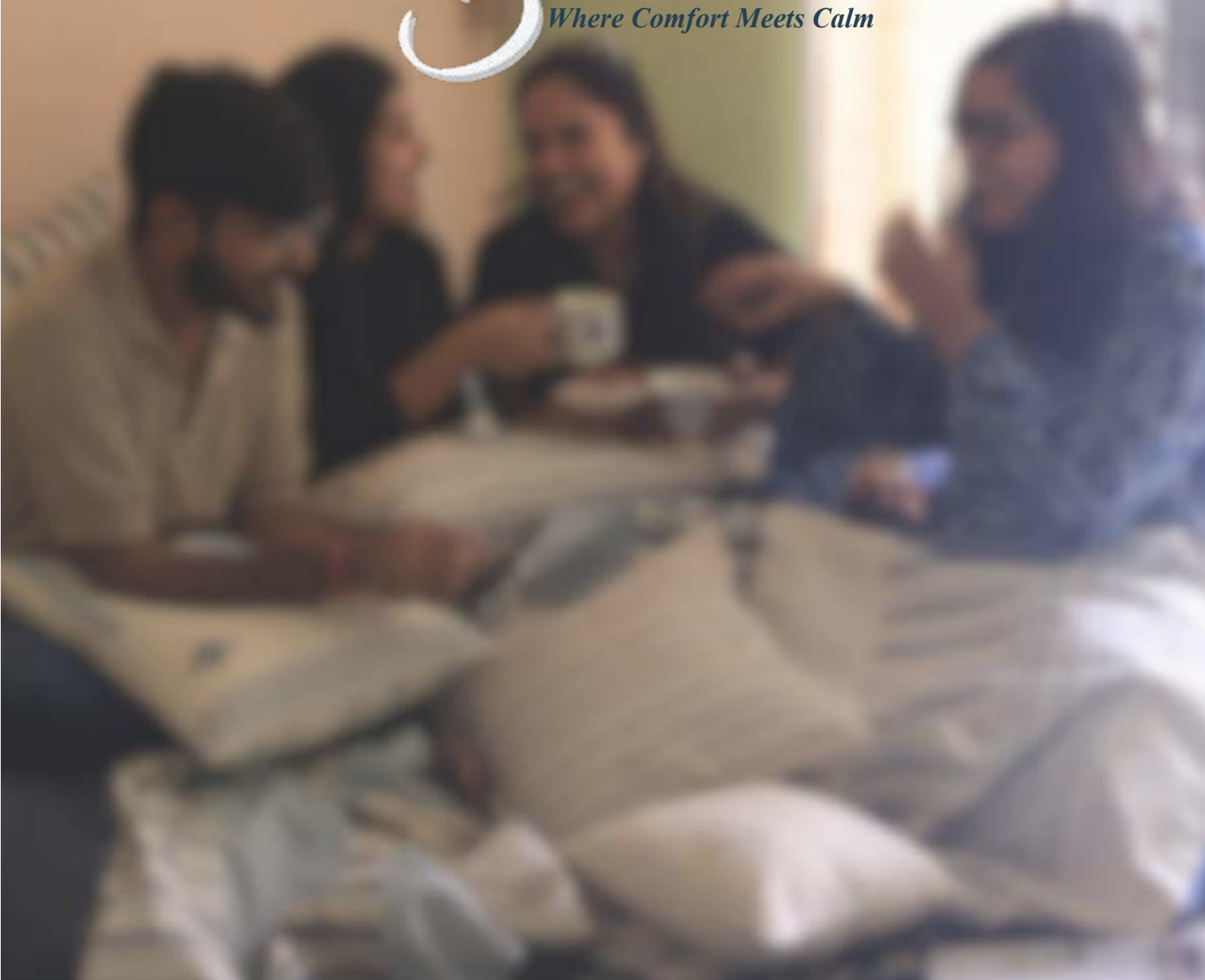




Ukoon

Where Comfort Meets Calm



A Handloom Collection Designed by us & woven by the weavers of Siwan



Fig. 1 - photoshoot

ABOUT THE BRAND

Sukoon is a home furnishing brand rooted in the warmth of Indian handweaving. We create thoughtfully crafted textiles that bring a sense of calm and softness into everyday living. By working closely with weaving communities and blending traditional techniques with simple, modern design, we make pieces that feel natural, personal, and quietly beautiful.

PHILOSOPHY

At Sukoon, we celebrate the quiet poetry of Indian homes, the kind of warmth, simplicity, and belonging that flows naturally through everyday living. We come from a rich tradition of Indian handweaving, and we believe that true comfort isn't about perfection. It's about gentle textures, soft tones, and the handmade nuances that make a space feel alive and deeply personal.

Every product we create is woven with intention to bring peace into movement, softness into living, and a sense of connection into craft. By blending age-old weaving practices with thoughtful, contemporary design, we aim to bring emotional comfort and mindful beauty into the spaces you call home.

At our heart, we stand for slowness, authenticity, and soulful living, a reminder that home isn't just what we decorate but what we feel

OUR VISION

We aim to redefine how modern homes experience comfort by making handcrafted textiles an essential part of everyday living. Our focus is on building a sustainable future for Indian weaving communities, where traditional skills can thrive and evolve.

We strive toward a world where artisanal craft is valued, where slowness has space, and where homes feel emotionally grounded, not because of how they look but because of how they make us feel.



EHSAAS

'Ehsaas ' is an inspiration drawn from angaan of every Indian home where life happens to its most organic form. The angaan is a balance between chaos and calm, a room where laughter, activity and everyday noise coexists with stillness and comfort. It feels like a place where it's safe to land, with a subtle calm amid the chaos of every day.

The collection takes inspiration from different element present in the angaan, conveying warmth, simplicity and a cosy corner for your self in woven phenomina. It represents tranquility in contrast - capturing calm amidst vibrancy and connection amidst movement. It celebrates peace not as the absence of chaos, but something that is discovered within it, in love, laughter, the soft comfort of home

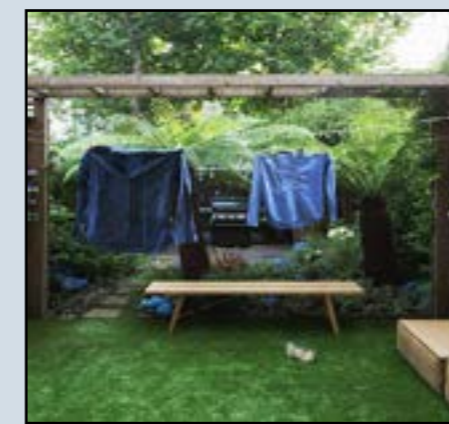


Fig. 2 - Inspiration Board

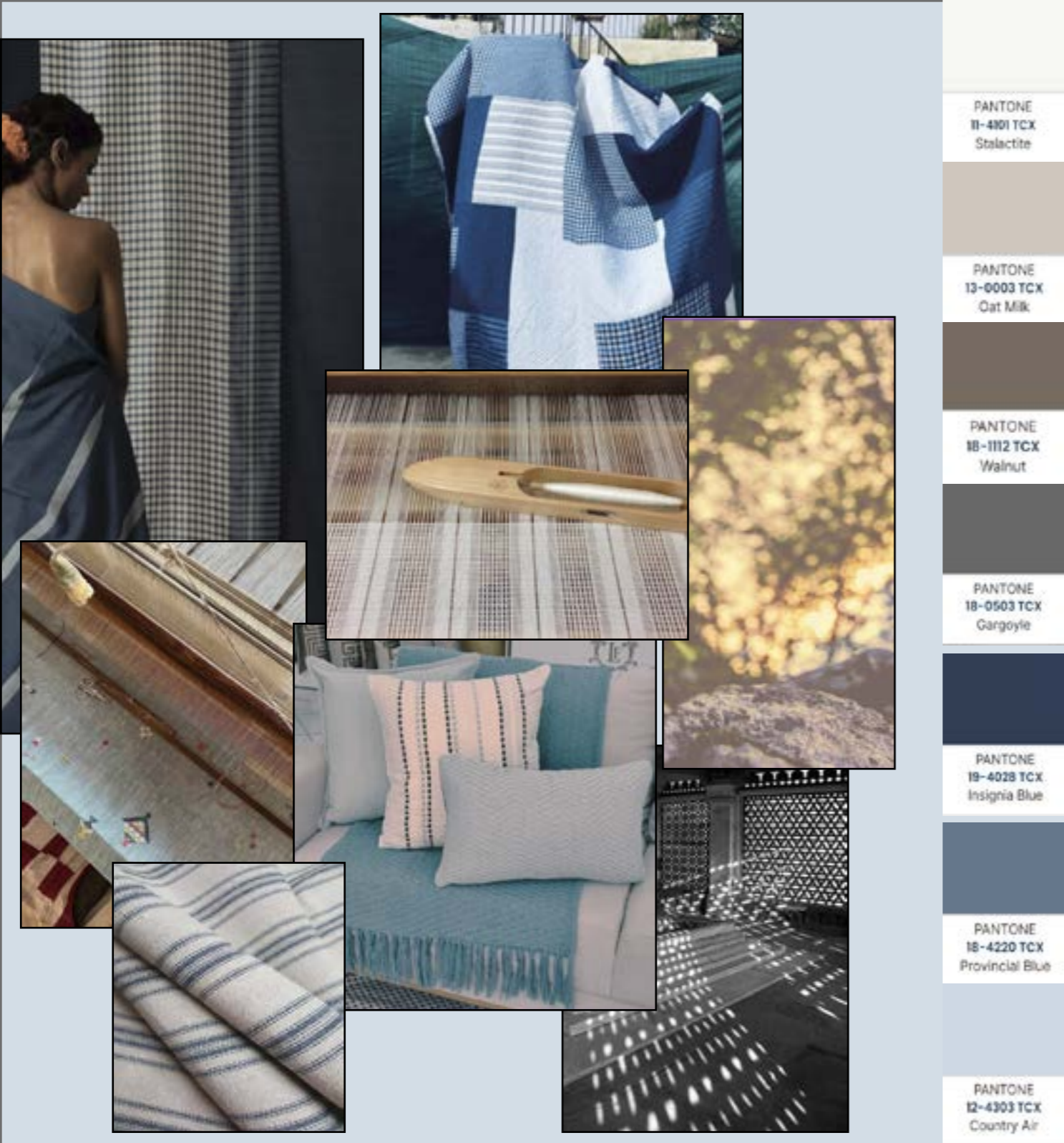


Fig. 3 - mood & color board

The moodboard reflects the serene essence of the angaan, portraying a balance between warmth and tranquility. The color palette of soft blues and neutral tones conveys calmness and familiarity, while the woven textures and light interactions highlight comfort, harmony, and the peaceful rhythm of everyday life.

CLIENT PROFILE

Age Group: 28–50 years

Market Segment: Upper–middle to premium residential interiors

Lifestyle: Mindful, balanced, and comfort-oriented

Values: Authenticity, cultural connection, and sustainability

Aesthetic Preferences: Earthy tones, natural fibers, handcrafted textures

Design Sensibility: Blend of traditional warmth with contemporary simplicity

Buying Behavior:

Prioritize quality and craftsmanship

Prefer timeless, versatile designs

Support ethically made and locally produced textiles

Emotional Appeal: Seek calmness, nostalgia, and a sense of togetherness in their living spaces

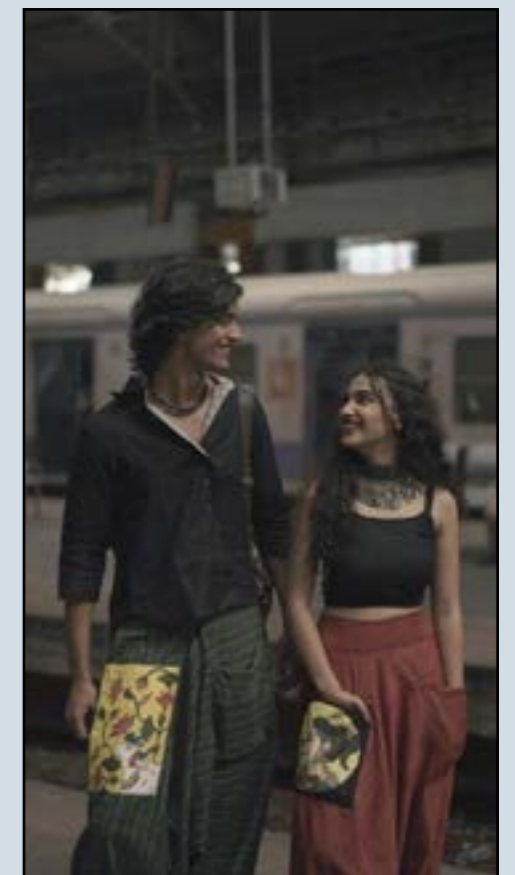


Fig. 4 - client

MOTIF DEVELOPMENT

All the motifs developed for the collection are abstractual interpretation of different elements of the courtyard, which adds value to the place

All the motifs are carefully created to have a similar structure but developed through different elements.

Fig. 5- extra weft on loom

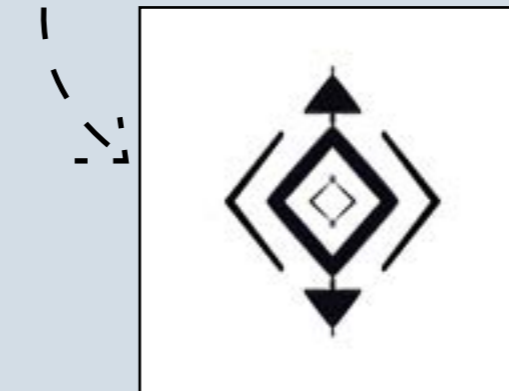
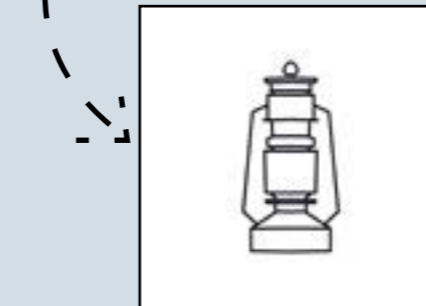


Fig. 6 - motif 1

As evening falls, the lantern fills the angan with a soft, soothing light, reflecting the warmth and stillness of home life

The charpai in the angan is where most of the day's moments unfold, talking, relaxing, or simply lying down in peace.

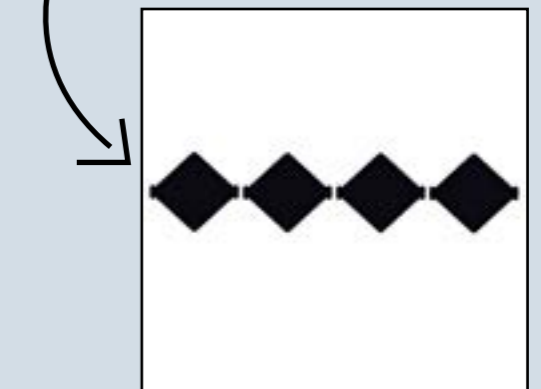
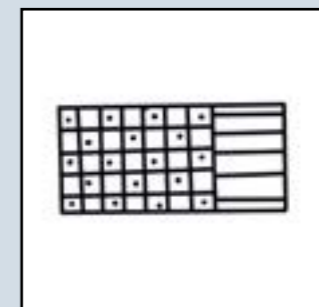
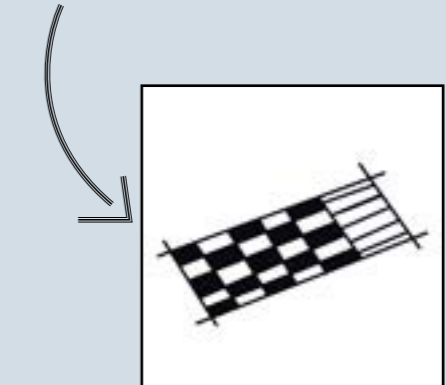


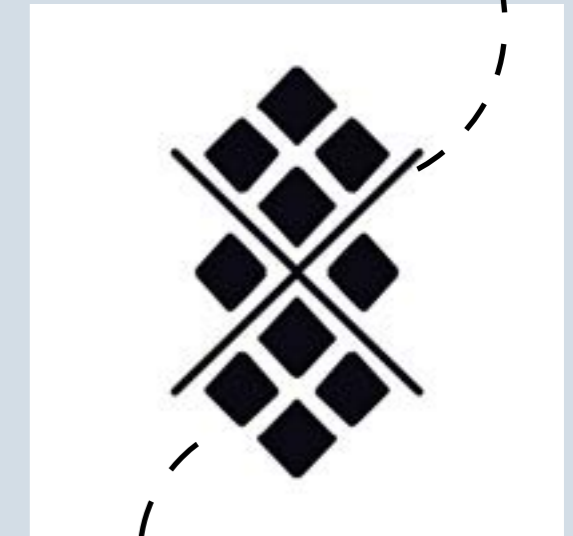
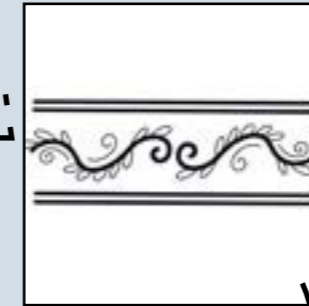
Fig. 7 - motif 2



The Tulsi Pind brings purity and balance to the angan, representing daily devotion and calm continuity in the home



Almost every angan has an Alpana or Rangoli at its entrance, made by hand to welcome and bring positive energy into the home.



- The intersecting patterns symbolize the pathways of the angan, where life and connections meet.

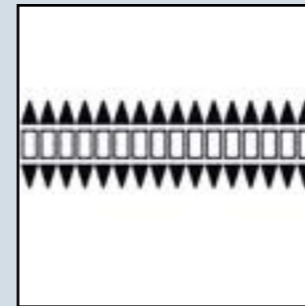
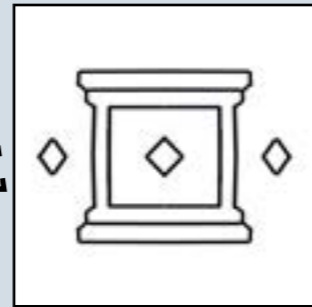
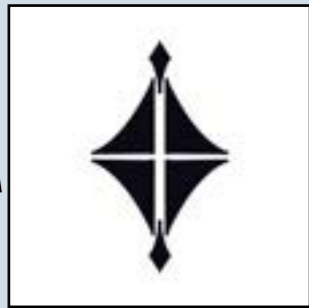
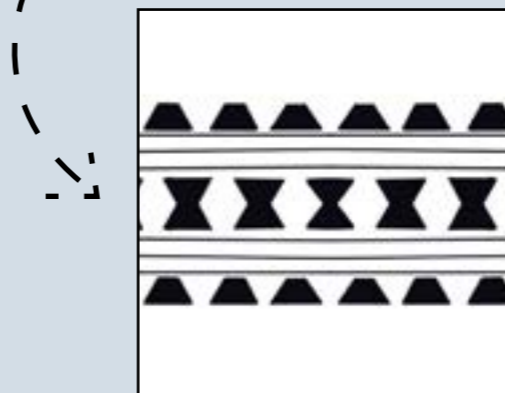
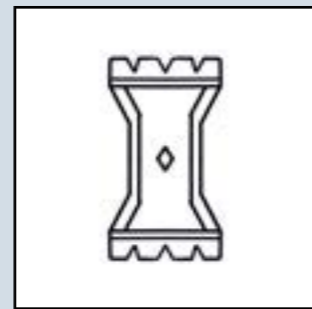
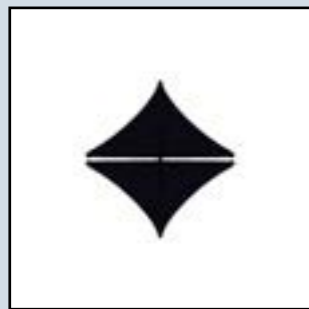


Fig. 11 - motif 6



- The diamond shapes are inspired by terracotta tiles and folded fabrics.
- It reflects order, stability and harmony in the home.



Fig. 8 - motif 3

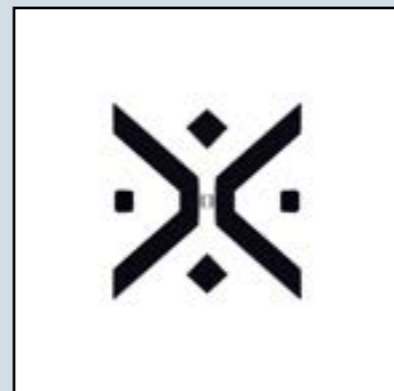
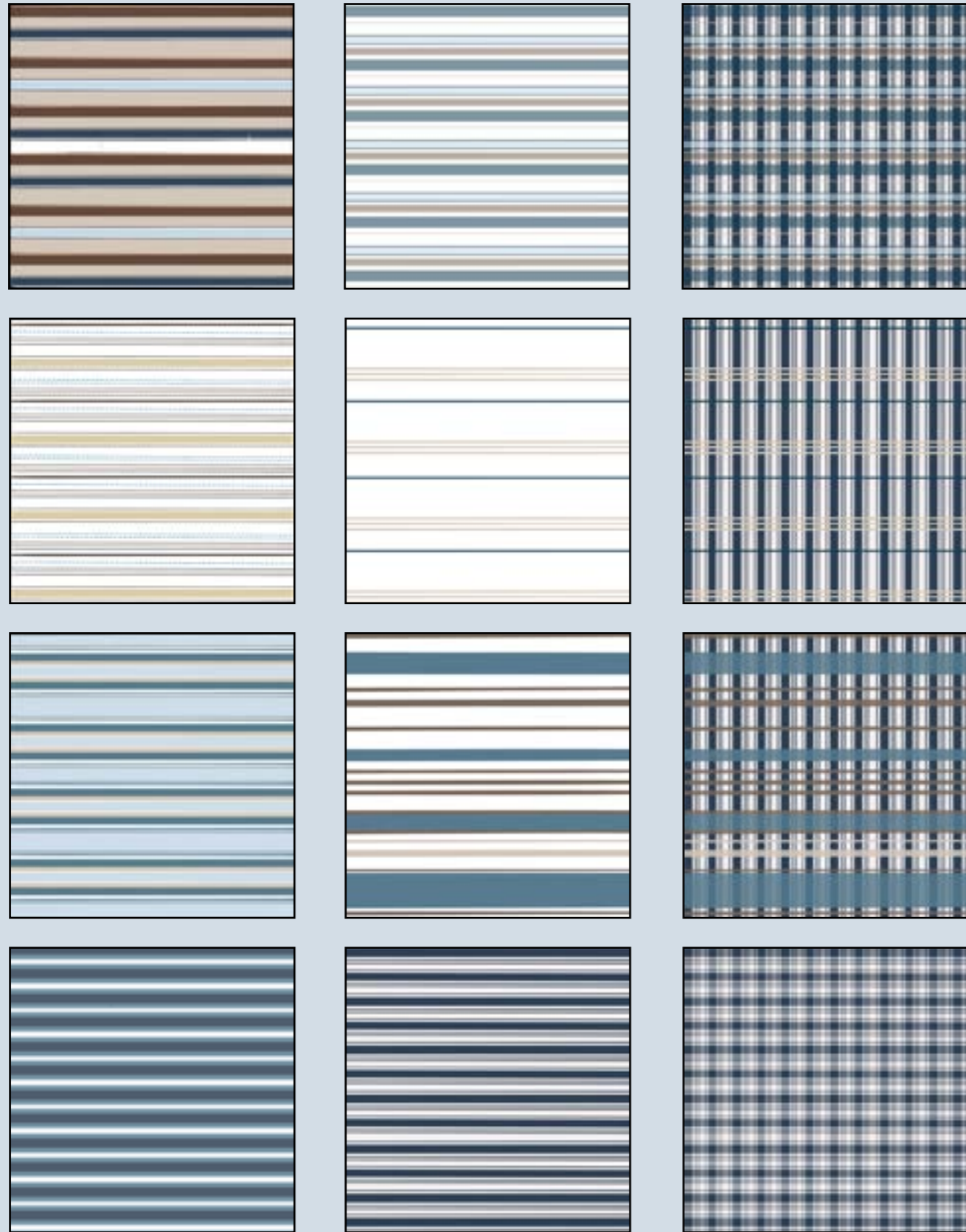


Fig. 9 - motif 4

Fig. 10 - motif 5

After a tiring day one of the most peaceful thing is laying down in the aangan and looking up the open sky and watching the sparkling stars



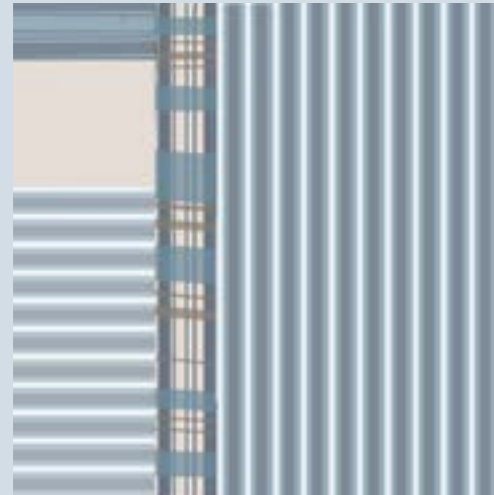
STRIPES & CHECKS

The stripes and checks in this collection are developed to reflect the duality of the aangan , its quiet order and its everyday movement. Variations in spacing, density, and rhythm create patterns that shift between calm and controlled chaos. The tightly spaced lines introduce a sense of energy and activity, while wider intervals allow the eye to rest, bringing openness and ease. In the checks, intersecting bands form structured grids that echo layered moments within the home, yet remain softened by the muted, grounded palette. Together, these patterns balance motion with stillness, creating textiles that feel dynamic but inherently soothing



Fig.12 - onloom stripes making

DESIGN -1 (CUSHION)



Front



Back

General Information	
Season/Collection	S/S27- EHSAAASE'
Brand Name	SUKOON
Product Category	Soft Furnishing
Target Market	India
Production Timeline	16/9-20/11

Design Details	
Sketch	Front & Back
Fabric Type	Woven
Weave Direction	plain weave
Trims & Accessories	Cording, tassels, Buttons
Pantone Code	11-4101 TCX,13-0003 TCX ,18-1112 TCX,18-0503 TCX ,19-4028 TCX,18-4220 TCX,12-4303 TCX

Material Detail	
Yarns	20/2 Cotton
Gsm/Weight	
Dye Detail	Reactive Dye

Measurement Specification	
Size	20'' x 20''

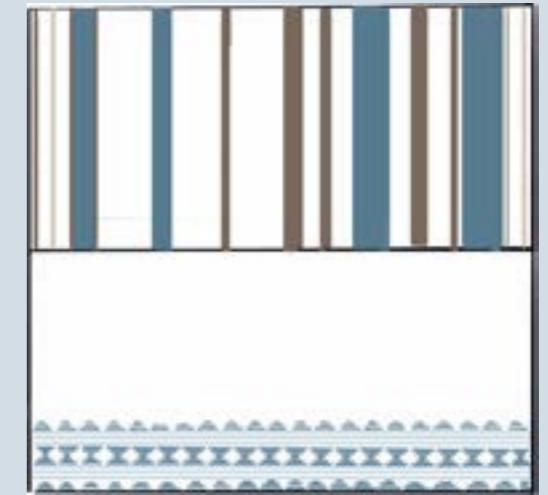
Production Process	
Cutting Instruction	On Grain
Sewing Operations	Stitching Machine
Wash Instruction	Handwash
Finishing Details	Ironing/Pressing

Packing Instruction	
Folding Method	Neat Flat Fold
Packing Material	Muslin wrap
Packing Quantity	As per Set Type
Shipping Marks	Labelling

DESIGN -2 (CUSHION)



Front



Back

General Information	
Season/Collection	S/S27- EHSAAASE'
Brand Name	SUKOON
Product Category	Soft Furnishing
Target Market	India
Production Timeline	16/9-20/11

Design Details	
Sketch	Front & Back
Fabric Type	Woven
Weave Direction	plain weave
Trims & Accessories	Cording, tassels, Buttons
Pantone Code	11-4101 TCX,13-0003 TCX ,18-1112 TCX,18-0503 TCX ,19-4028 TCX,12-4303 TCX

Material Detail	
Yarns	20/2 Cotton
Gsm/Weight	
Dye Detail	Reactive Dye

Measurement Specification	
Size	16'' x 16''

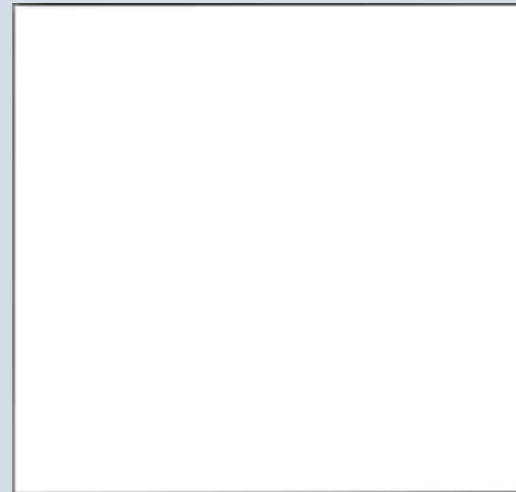
Production Process	
Cutting Instruction	On Grain
Sewing Operations	Stitching Machine
Wash Instruction	Handwash
Finishing Details	Ironing/Pressing

Packing Instruction	
Folding Method	Neat Flat Fold
Packing Material	Muslin wrap
Packing Quantity	As per Set Type
Shipping Marks	Labelling

DESIGN -3 (CUSHION)



Front



Back

General Information

Season/Collection	S/S27- EHSAASE'
Brand Name	SUKOON
Product Category	Soft Furnishing
Target Market	India
Production Timeline	16/9-20/11

Design Details

Sketch	Front & Back
Fabric Type	Woven
Weave Direction	plain weave
Trims & Accessories	Cording, tassels, Buttons
Pantone Code	11-4101 TCX,13-0003 TCX ,18-1112 TCX 18-4220 TCX 12-4303 TCX

Material Detail

Yarns	20/2 Cotton
Gsm/Weight	
Dye Detail	Reactive Dye

Measurement Specification

Size	12'' x 12''
-------------	-------------

Production Process

Cutting Instruction	On Grain
Sewing Operations	Stitching Machine
Wash Instruction	Handwash
Finishing Details	Ironing/Pressing

Packing Instruction

Folding Method	Neat Flat Fold
Packing Material	Muslin wrap
Packing Quantity	As per Set Type
Shipping Marks	Labelling

DESIGN -4 (LUMBAR CUSHION)



Front



Back

General Information

Season/Collection	S/S27- EHSAASE'
Brand Name	SUKOON
Product Category	Soft Furnishing
Target Market	India
Production Timeline	16/9-20/11

Design Details

Sketch	Front & Back
Fabric Type	Woven
Weave Direction	plain weave
Trims & Accessories	Cording, tassels, Buttons
Pantone Code	11-4101 TCX,13-0003 TCX ,18-1112 TCX 18-0503 TCX ,19-4028 TCX,18-4220 TCX 12-4303 TCX

Material Detail

Yarns	20/2 Cotton
Gsm/Weight	
Dye Detail	Reactive Dye

Measurement Specification

Size	14'' x 20''
-------------	-------------

Production Process

Cutting Instruction	On Grain
Sewing Operations	Stitching Machine
Wash Instruction	Handwash
Finishing Details	Ironing/Pressing

Packing Instruction

Folding Method	Neat Flat Fold
Packing Material	Muslin wrap
Packing Quantity	As per Set Type
Shipping Marks	Labelling

DESIGN -5 (CUSHION)



Front



Back

General Information	
Season/Collection	S/S27- EHSAASE'
Brand Name	SUKOON
Product Category	Soft Furnishing
Target Market	India
Production Timeline	16/9-20/11

Design Details	
Sketch	Front & Back
Fabric Type	Woven
Weave Direction	plain weave
Trims & Accessories	Cording, tassels, Buttons
Pantone Code	11-4101 TCX,13-0003 TCX ,18-1112 TCX 18-0503 TCX ,19-4028 TCX,18-4220 TCX 12-4303 TCX

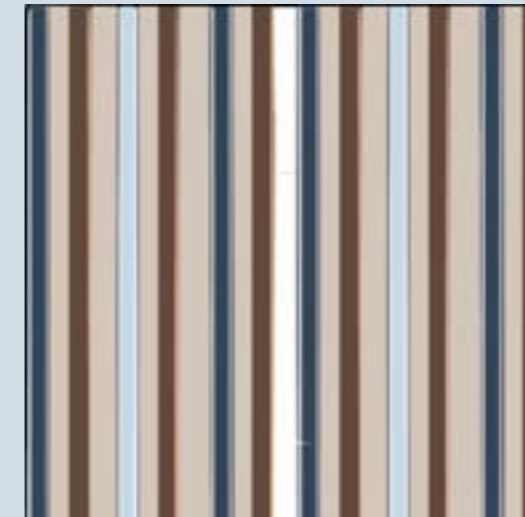
Material Detail	
Yarns	20/2 Cotton
Gsm/Weight	
Dye Detail	Reactive Dye

Measurement Specification	
Size	12" x 12"

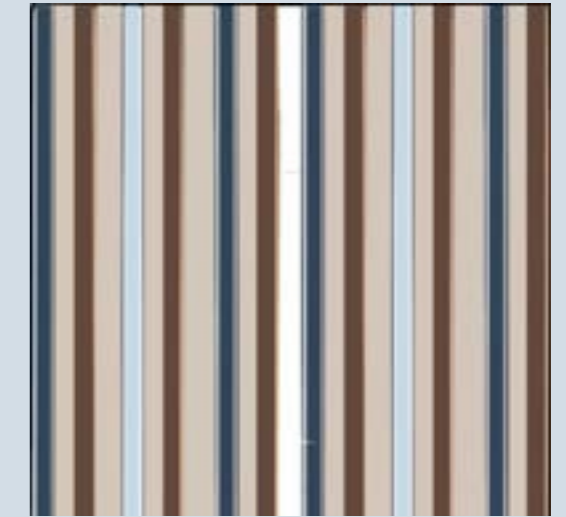
Production Process	
Cutting Instruction	On Grain
Sewing Operations	Stitching Machine
Wash Instruction	Handwash
Finishing Details	Ironing/Pressing

Packing Instruction	
Folding Method	Neat Flat Fold
Packing Material	Muslin wrap
Packing Quantity	As per Set Type
Shipping Marks	Labelling

DESIGN -6 (CUSHION)



Front



Back

General Information	
Season/Collection	S/S27- EHSAASE'
Brand Name	
Product Category	Soft Furnishing
Target Market	India
Production Timeline	16/9-20/11

Design Details	
Sketch	Front & Back
Fabric Type	Woven
Weave Direction	plain weave
Trims & Accessories	Cording, tassels, Buttons
Pantone Code	11-4101 TCX,13-0003 TCX ,18-1112 TCX 18-0503 TCX ,19-4028 TCX,

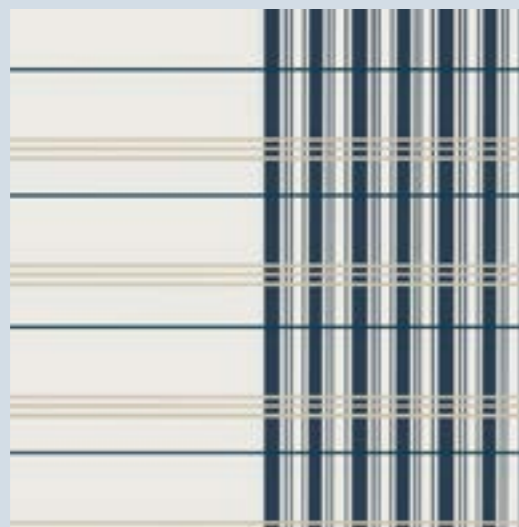
Material Detail	
Yarns	20/2 Cotton
Gsm/Weight	
Dye Detail	Reactive Dye

Measurement Specification	
Size	16" x 16"

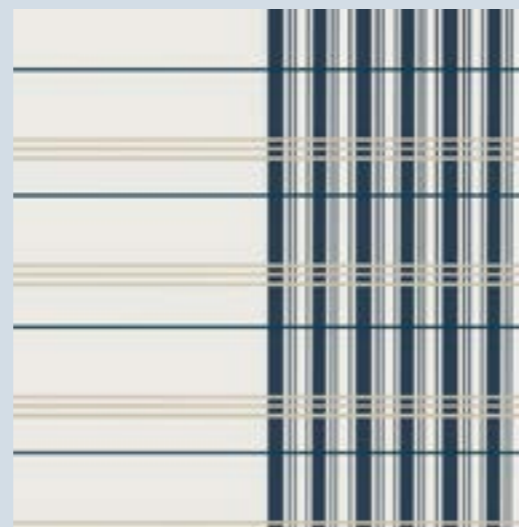
Production Process	
Cutting Instruction	On Grain
Sewing Operations	Stitching Machine
Wash Instruction	Handwash
Finishing Details	Ironing/Pressing

Packing Instruction	
Folding Method	Neat Flat Fold
Packing Material	Muslin wrap
Packing Quantity	As per Set Type
Shipping Marks	Labelling

DESIGN -7 (CUSHION)



Front



Back

General Information	
Season/Collection	S/S27- EHSAASE'
Brand Name	SUKOON
Product Category	Soft Furnishing
Target Market	India
Production Timeline	16/9-20/11

Design Details	
Sketch	Front & Back
Fabric Type	Woven
Weave Direction	plain weave
Trims & Accessories	Cording, tassels, Buttons
Pantone Code	11-4101 TCX,13-0003 TCX ,18-1112 TCX,12-4303 TCX

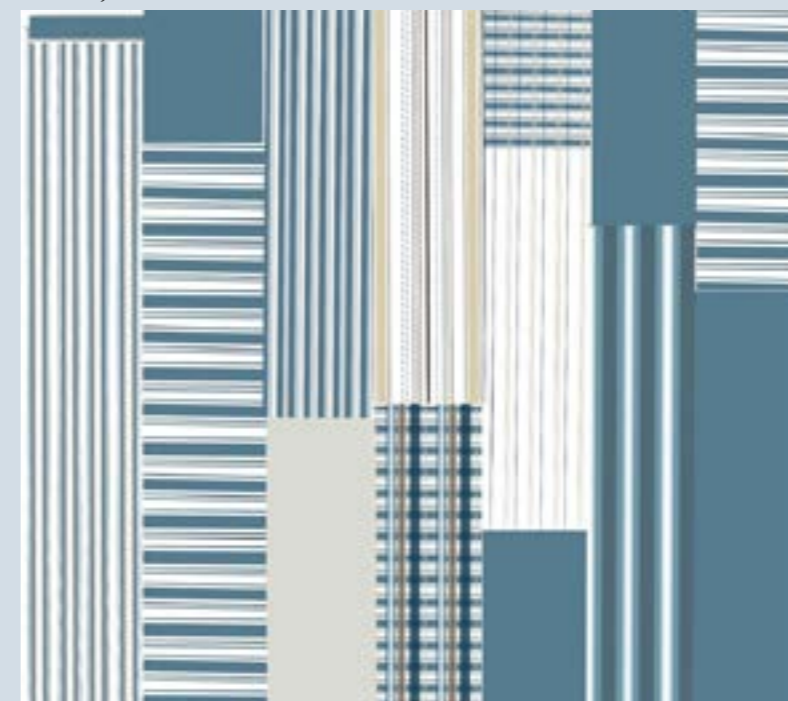
Material Detail	
Yarns	20/2 Cotton
Gsm/Weight	
Dye Detail	Reactive Dye

Measurement Specification	
Size	20" x 20"

Production Process	
Cutting Instruction	On Grain
Sewing Operations	Stitching Machine
Wash Instruction	Handwash
Finishing Details	Ironing/Pressing

Packing Instruction	
Folding Method	Neat Flat Fold
Packing Material	Muslin wrap
Packing Quantity	As per Set Type
Shipping Marks	Labelling

DESIGN -8 (THROW)



Front

General Information	
Season/Collection	S/S27- EHSAASE'
Brand Name	
Product Category	Soft Furnishing
Target Market	India
Production Timeline	16/9-20/11

Design Details	
Sketch	Front & Back
Fabric Type	Woven
Weave Direction	plain weave
Trims & Accessories	Cording, tassels, Buttons
Pantone Code	11-4101 TCX,13-0003 TCX ,18-1112 TCX,18-0503 TCX ,19-4028 TCX,18-4220 TCX,12-4303 TCX

Material Detail	
Yarns	20/2 Cotton
Gsm/Weight	
Dye Detail	Reactive Dye

Measurement Specification	
Size	60" x 50"

Production Process	
Cutting Instruction	On Grain
Sewing Operations	Stitching Machine
Wash Instruction	Handwash
Finishing Details	Ironing/Pressing

Packing Instruction	
Folding Method	Neat Flat Fold
Packing Material	Muslin wrap
Packing Quantity	As per Set Type
Shipping Marks	Labelling

DESIGN -9 (CURTAIN)

Design Details

Sketch	Front & Back
Fabric Type	Woven
Weave Direction	plain weave
Trims & Accessories	Cording, tassels, Buttons
Pantone Code	11-4101 TCX,13-0003 TCX ,18-1112 TCX,18-0503 TCX ,19-4028 TCX,18-4220 TCX

Material Detail

Yarns	20/2 Cotton
Gsm/Weight	
Dye Detail	Reactive Dye

Measurement Specification

Size	84"x48"
------	---------

Production Process

Cutting Instruction	On Grain
Sewing Operations	Stitching Machine
Wash Instruction	Handwash
Finishing Details	Ironing/Pressing

Packing Instruction

Folding Method	Neat Flat Fold
Packing Material	Muslin wrap
Packing Quantity	As per Set Type
Shipping Marks	Labelling

General Information

Season/Collection	S/S27- EHSAASE'
Brand Name	SUKOON
Product Category	Soft Furnishing
Target Market	India
Production Timeline	16/9-20/11



Front

DESIGN -10 (CURTAIN)

Design Details

Sketch	Front & Back
Fabric Type	Woven
Weave Direction	plain weave
Trims & Accessories	Cording, tassels, Buttons
Pantone Code	11-4101 TCX,13-0003 TCX

Material Detail

Yarns	20/2 Cotton
Gsm/Weight	
Dye Detail	Reactive Dye

Measurement Specification

Size	84"x24"
------	---------

Production Process

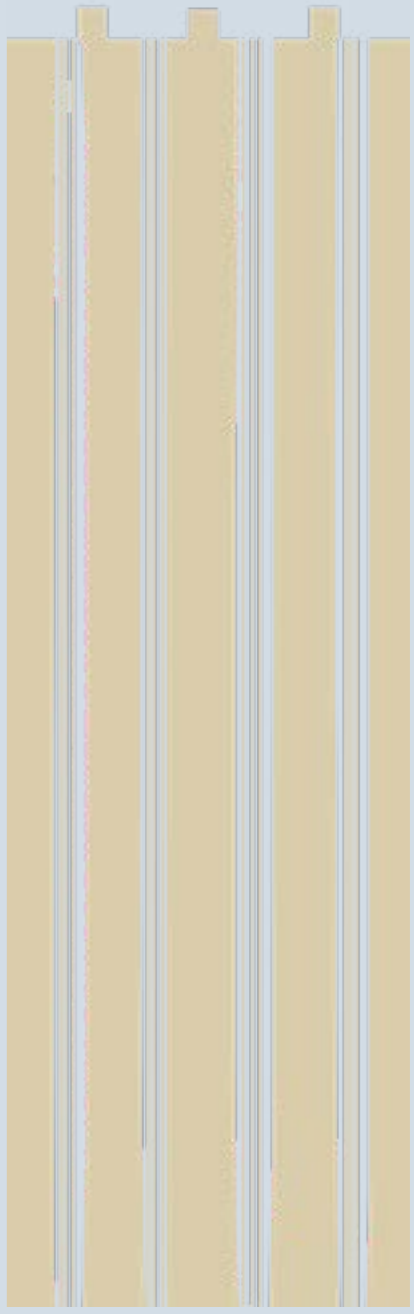
Cutting Instruction	On Grain
Sewing Operations	Stitching Machine
Wash Instruction	Handwash
Finishing Details	Ironing/Pressing

Packing Instruction

Folding Method	Neat Flat Fold
Packing Material	Muslin wrap
Packing Quantity	As per Set Type
Shipping Marks	Labelling

General Information

Season/Collection	S/S27- EHSAASE'
Brand Name	SUKOON
Product Category	Soft Furnishing
Target Market	India
Production Timeline	16/9-20/11



Front



Fig.13 - photoshoot



Fig.14 - photoshoot zoomed in view



Fig.15 - photoshoot zoomed in view



Fig.16 - photoshoot zoomed in view of small table cloth



Fig.17 - photoshoot zoomed in view



Fig.18- photoshoot



Fig.19- photoshoot of small cushions



Fig.20 - photoshoot of patchwork throw



Fig.21- photoshoot of curtains



Fig.22- photoshoot



Fig.23- photoshoot of patchwork cushion

WEAVERS PROFILE



ARMAAN ANSARI

Age: 20 years
Community: Muslim (Ansari)
Address: Gopalpur Jamal Hata
Hussainganj Siwan 841286
Phone: 7480800485
Education: 9th
Family unit: 8 Members (Son of Reyaz Ahamd)
Work: Fabric Weaving
Experience: 5 years





Bivha Kumari . Riya Kumari . Sahil Rout . Saloni . Shraddha Chaudhary . Shristi Deep

The CDBP experience has been a meaningful and enriching journey, allowing us to explore creativity while understanding the practical realities of craft based design. Developing design stories, creating color palettes, and shaping concepts strengthened our ability to think visually and communicate clearly. Interacting with artisans and observing their processes firsthand deepened our appreciation for their skill, patience, and dedication. Gaining insight into the entire workflow from material sourcing to production, branding, and final presentation helped us see how each stage contributes to a cohesive outcome. This project taught us to balance creativity with practical decision making, adapt to challenges, and approach design with greater sensitivity and intention, ultimately shaping our skills for future endeavors.



Lykoon